



# GAT MONTHLY MEMBERSHIP PROGRESS REPORT

Results as of: 1/31/2022

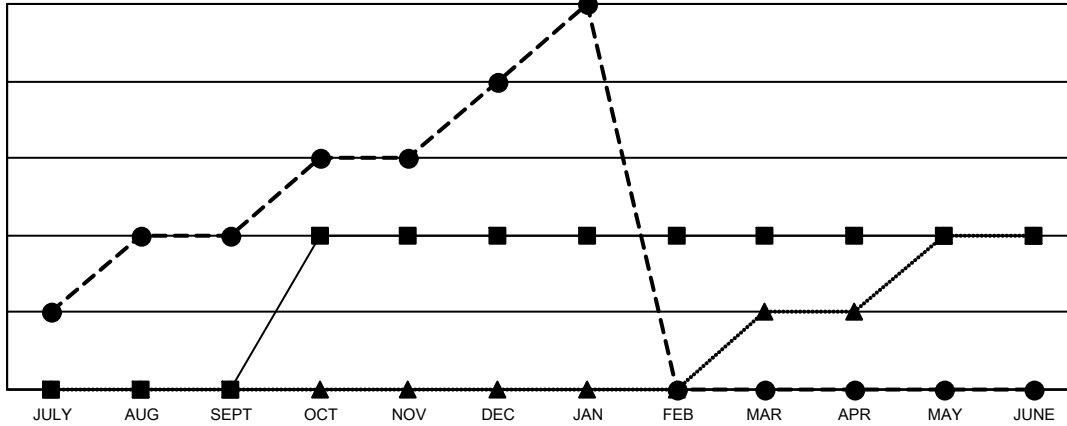
Multiple District 117

LOCATION: GREECE

| Clubs                 |               |           |               |
|-----------------------|---------------|-----------|---------------|
| RESULTS FOR 2021-2022 |               |           |               |
| QUARTER               | NEW CLUB GOAL | NEW CLUBS | DROPPED CLUBS |
| JULY/AUG/SEPT         | 0             | 2         | 0             |
| OCT/NOV/DEC           | 2             | 2         | 1             |
| JAN/FEB/MAR           | 0             | 1         | 0             |
| APR/MAY/JUNE          | 0             | 0         | 0             |

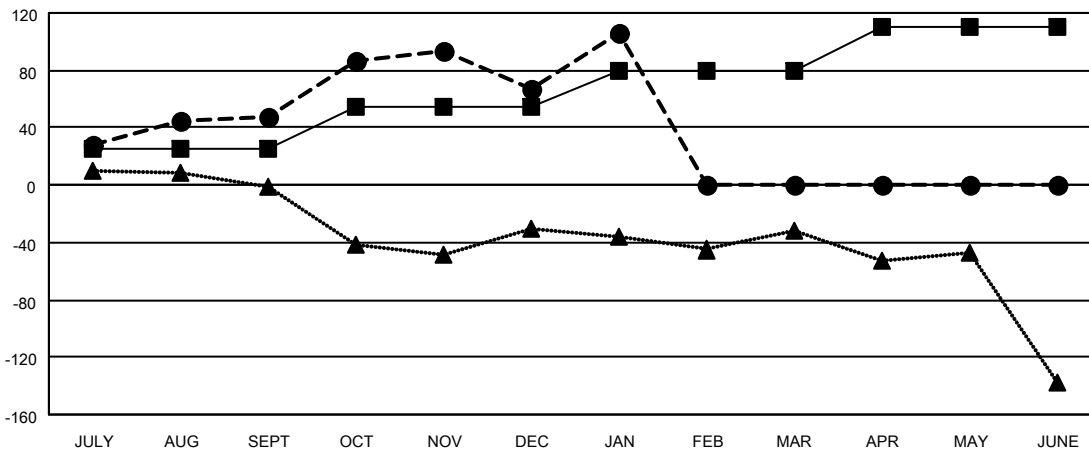
| Members               |                        |                      |  |
|-----------------------|------------------------|----------------------|--|
| RESULTS FOR 2021-2022 |                        |                      |  |
| QUARTER               | MEMBER GROWTH NET GOAL | MEMBER GROWTH ACTUAL | DROPPED MEMBERS ACTUAL (including transfers) |
| JULY/AUG/SEPT         | 25                     | 92                   | 37   |
| OCT/NOV/DEC           | 30                     | 116                  | 95   |
| JAN/FEB/MAR           | 25                     | 52                   | 11   |
| APR/MAY/JUNE          | 30                     | 0                    | 0  |

GOALS AND ACTUAL NEW CLUBS CUMULATIVE



- - CURRENT YEAR GOALS FOR NEW CLUBS
- - CURRENT YEAR ACTUAL NEW CLUBS
- ▲ - LAST YEAR ACTUAL NEW CLUBS

GOALS AND ACTUAL MEMBERS CUMULATIVE



- - MEMBER GROWTH NET GOAL
- - MEMBER GROWTH ACTUAL
- ▲ - LAST YEAR MEMBERSHIP ACTUAL

|                        |            |
|------------------------|------------|
| DROPPED CLUBS: 1       |            |
| <b>DROPPED MEMBERS</b> |            |
| DECEASED               | 17         |
| CLUB CANCELLED         | 12         |
| OTHER                  | 114        |
| <b>TOTAL</b>           | <b>143</b> |

38 CLUBS OF 95 ADDED 1 OR MORE NEW MEMBERS

[CLICK HERE FOR CUMULATIVE MEMBERSHIP DATA](#)

| GENDER DISTRIBUTION                    |                |
|--|----------------|
| MALE                                   | 872 (41.56%)   |
| FEMALE                                 | 1,225 (58.39%) |
| NON BINARY                             | 0 (0.00%)      |
| PREFER NOT TO ANSWER                   | 1 (0.05%)      |
| <b>TOTAL FAMILY UNIT MEMBERS</b>       | <b>389</b>     |
| <b>FAMILY MEMBERS PAYING HALF DUES</b> | <b>211</b>     |